

C(E) Series

The C(E) series incorporates a brass body with a 90° elbow inlet and SAE flare fittings using balanced port construction, allowing operation over varying load conditions. Designed for use on small refrigeration and or air conditioning systems, the external equalized models are provided with a 1/4" SAE male connection.

Applications

- Small Refrigeration Systems
- Slush Machines
- Air Conditioning Units
- Freezers
- Walk-in Coolers
- Refrigerated Cases
- Rail & Transport Refrigeration

Features and Benefits

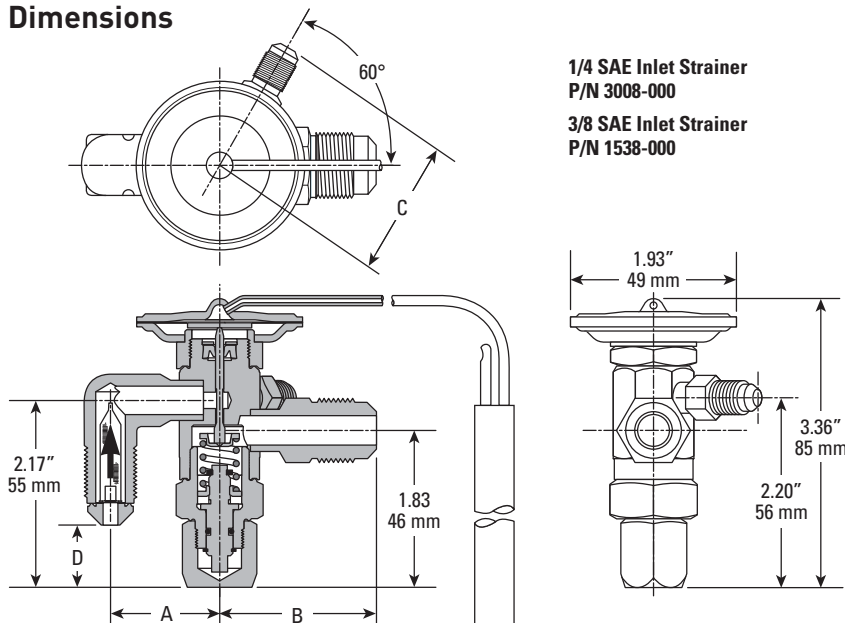
- Balanced port design
- Removable power element
- Inlet strainer – 100 mesh
- 60" capillary tube
- Field adjustable superheat
- 1/4" SAE external equalizer
- Weight: 1.0 lbs / 0.45 kg



Specifications

Refrigerant	Refrigerant Designation	Orifice Designation	Nominal Capacity (Tons)	Capacity Range of Valve to be Replaced (Tons)	Valve Description		Rainbow Charges™	Connection - (Inches)		External Equalizer Connection (Inches)
					Internally Equalized	Externally Equalized		Inlet	Outlet	
R-12 R-134a R-401A R-401B	J	AA	1/4	1/6 to 1/4	C-AA-J	CE-AA-J	W X60	1/4 SAE	1/2 SAE	1/4 SAE
		A	1	1/2 to 1	C-A-J	CE-A-J		3/8 SAE		
		B	2	1 to 2	C-B-J	CE-B-J		5/8 SAE		
		C	3	2 to 3	C-C-J	CE-C-J				
		D	5	3 to 5	C-D-J	CE-D-J				
R-402A R-402B R-404A R-502	S	AA	1/4	1/6 to 1/4	C-AA-S	CE-AA-S	W Z X110 X35	1/4 SAE	1/2 SAE	1/4 SAE
		A	1	1/2 to 1	C-A-S	CE-A-S		3/8 SAE		
		B	2	1 to 2	C-B-S	CE-B-S		5/8 SAE		
		C	3-1/2	2 to 3-1/2	C-C-S	CE-C-S				
		D	6	3-1/2 to 6	C-D-S	CE-D-S				
R-22 R-407C R-422D	V	AA	1/2	1/3 to 1/2	C-AA-V	CE-AA-V	W Z X100 X35	1/4 SAE	1/2 SAE	1/4 SAE
		A	1-1/2	3/4 to 1-1/2	C-A-V	CE-A-V		3/8 SAE		
		B	3	1-1/2 to 3	C-B-V	CE-B-V		5/8 SAE		
		C	5	3 to 5	C-C-V	CE-C-V				
		D	8	5 to 8	C-D-V	CE-D-V				

Dimensions



1/4 SAE Inlet Strainer
P/N 3008-000
3/8 SAE Inlet Strainer
P/N 1538-000

Fitting Size	A	B	C	D
1/4 SAE	1.11" 28 mm	—	1.54" 39 mm	1.15" 29 mm
3/8 SAE	1.27" 32 mm	—	—	0.75" 19 mm
1/2 SAE	—	1.82" 46 mm	—	—
5/8 SAE	—	1.98" 50 mm	—	—

Replacement Elements

Refrigerant Designation	Element
V	KT-46-VW KT-46-VX100
J	KT-46-JW KT-46-JX60
S	KT-46-SZ KT-46-SW KT-46-SX35

EC(E) Series

The EC(E) series features extended ODF solder connections, brass body and balanced port design. It is suited for both refrigeration and air conditioning applications.

Applications

- Small Chillers
- Air Conditioning Units
- Freezers
- Walk-in Boxes
- Refrigerated Cases
- Mobile Refrigeration

Features and Benefits

- Extended ODF connections
- Balanced port design
- 60" capillary tube
- Removable power element
- Field adjustable superheat
- 1/4" ODF external equalizer
- Weight: 1.0 lbs / 0.45 kg



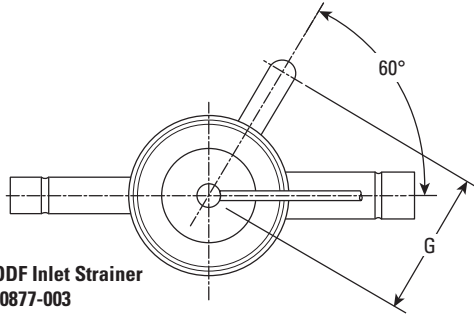
Specifications

Refrigerant	Refrigerant Designation	Orifice Designation	Nominal Capacity (Tons)	Capacity Range of Valve to be Replaced (Tons)	Valve Description		Rainbow Charges™	Connection - (Inches) Bold figures are standard		External Equalizer Connection (Inches)	
					Internally Equalized	Externally Equalized		Inlet	Outlet		
R-12 R-134a R-401A R-401B	J	AA	1/4	1/6 to 1/4	EC-AA-J	ECE-AA-J	W X60	1/4 ODF	1/2 ODF	1/4 ODF	
		A	1	1/2 to 1	EC-A-J	ECE-A-J		3/8 ODF			
		B	2	1 to 2	EC-B-J	ECE-B-J		3/8 ODF 1/2 ODF			1/2 ODF 5/8 ODF
		C	3	2 to 3	EC-C-J	ECE-C-J		3/8 ODF 1/2 ODF 5/8 ODF			1/2 ODF 5/8 ODF 7/8 ODF
		D	5	3 to 5	N/A	ECE-D-J		1/2 ODF 5/8 ODF			7/8 ODF
R-402A R-402B R-404A R-502 R-507	S	AA	1/4	1/6 to 1/4	EC-AA-S	ECE-AA-S	W Z X110 X35	1/4 ODF	1/2 ODF	1/4 ODF	
		A	1	1/2 to 1	EC-A-S	ECE-A-S		3/8 ODF			
		B	2	1 to 2	EC-B-S	ECE-B-S		3/8 ODF 1/2 ODF			1/2 ODF 5/8 ODF
		C	3-1/2	2 to 3-1/2	EC-C-S	ECE-C-S		3/8 ODF 1/2 ODF 5/8 ODF			1/2 ODF 5/8 ODF 7/8 ODF
		D	6	3-1/2 to 6	N/A	ECE-D-S		1/2 ODF 5/8 ODF			7/8 ODF
R-22 R-407C R-422D	V	AA	1/2	1/3 to 1/2	EC-AA-V	ECE-AA-V	W Z X100 X35	1/4 ODF	1/2 ODF	1/4 ODF	
		A	1-1/2	3/4 to 1-1/2	EC-A-V	ECE-A-V		3/8 ODF			
		B	3	1-1/2 to 3	EC-B-V	ECE-B-V		3/8 ODF 1/2 ODF			1/2 ODF 5/8 ODF
		C	5	3 to 5	EC-C-V	ECE-C-V		3/8 ODF 1/2 ODF 5/8 ODF			1/2 ODF 5/8 ODF 7/8 ODF
		D	8	5 to 8	N/A	ECE-D-V		1/2 ODF 5/8 ODF			7/8 ODF
R-410A	Z	AA	1/2	1/3 to 1/2	EC-AA-Z	ECE-AA-Z	X200	1/4 ODF	1/2 ODF	1/4 ODF	
		A	1-1/2	3/4 to 1-1/2	EC-A-Z	ECE-A-Z		3/8 ODF			
		B	3	1-1/2 to 3	EC-B-Z	ECE-B-Z		3/8 ODF 1/2 ODF			1/2 ODF 5/8 ODF
		C	5	3 to 5	EC-C-Z	ECE-C-Z		3/8 ODF 1/2 ODF 5/8 ODF			1/2 ODF 5/8 ODF 7/8 ODF
		D	8	5 to 8	N/A	ECE-D-Z		1/2 ODF 5/8 ODF			7/8 ODF
		N/A	12-1/2	8 to 12-1/2	N/A	ECE-12-1/2-Z		5/8 ODF			7/8 ODF
		N/A	15	12-1/2 to 15	N/A	ECE-15-Z					

EC(E) Series

Dimensions

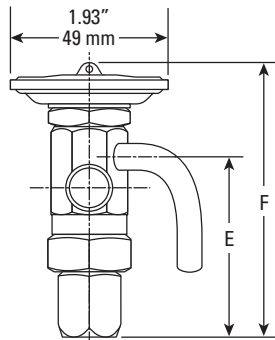
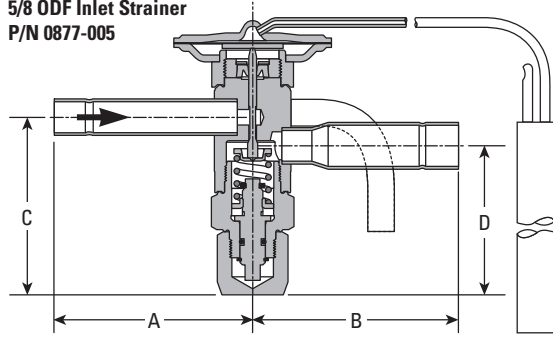
ECE-AA, -A, -B, -C, -D



3/8 ODF Inlet Strainer
P/N 0877-003

1/2 ODF Inlet Strainer
P/N 0877-004

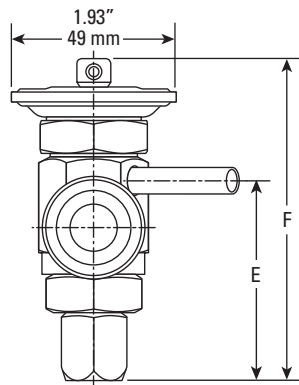
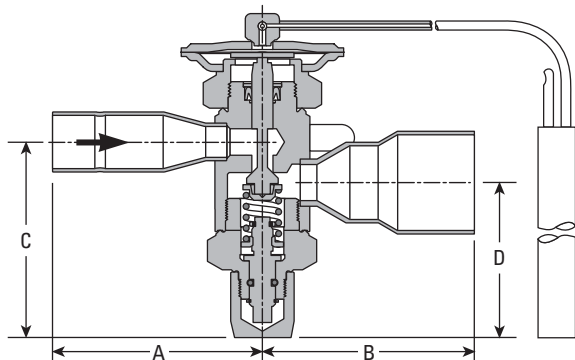
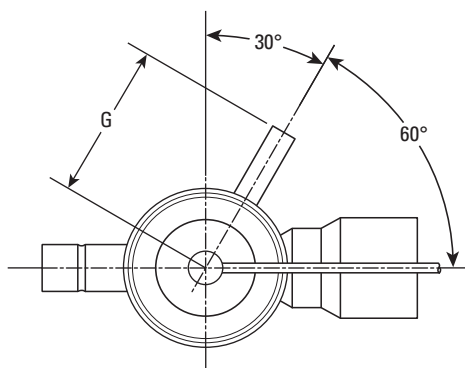
5/8 ODF Inlet Strainer
P/N 0877-005



Replacement Elements

Refrigerant Designation	Element
V	KT-46-VW KT-46-VX100
J	KT-46-JW
S	KT-46-SZ KT-46-SW KT-46-SX35
Z	KT-46-ZX200

ECE-12-1/2-Z and ECE-15-Z Only



Replacement Elements

Refrigerant Designation	Element
Z	KT-46-5-ZX200*

* For ECE-12-1/2-Z and ECE-15-Z only.

Fitting Size	A	B	C	D	E	F	G
1/4	—	—	—	—	2.36" 60 mm	3.79" 96 mm	1.90" 48 mm
5/8	2.48" 63 mm	—	2.30" 58 mm	—	—	3.79" 96 mm	—
7/8	—	2.51" 64 mm	—	1.83" 46 mm	—	3.79" 96 mm	—
1-1/8	—	2.51" 64 mm	—	1.83" 46 mm	—	3.79" 96 mm	—