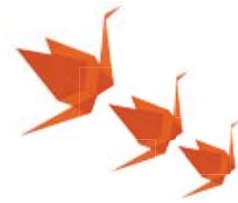


Wall Mounted R32 PERFORMANCE



RAK RPD



INFRA-RED REMOTE CONTROL*



WIRED REMOTE CONTROL**
SPX-WKT3



WIRED REMOTE CONTROL**
SPX-RCDB



RAC 35-50WPC

Indoor units

- /// Sustainable R32 refrigerant
- /// High seasonal performance SEER A+++ 8.50 and SCOP A++ 4.90, fully ErP compliant
- /// **Human Sensor**
Adapts the operation of the unit according to the presence or not of people in the room
- /// Dry contact available
- /// Can be locked into heating only
- /// Slim, stylish monobloc chassis blends into any interior
- /// Auto-diagnosis function
- /// **Horizontal & Vertical Auto-swing**
4 Way Swing keeps the temperature of the room constant by combining vertical & horizontal airflow for added end user comfort
- /// Compact Unit: 780 mm wide across the range
- /// High heating capacity down to -7°C
- /// Range compatible with the SOMFY & Hi-Kumo Wi-Fi home automation solution.

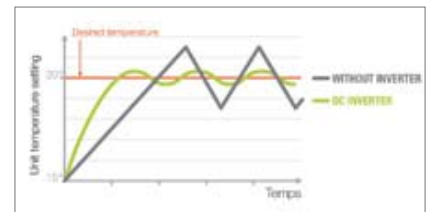
Remote controllers

- /// Infra-red remote control
- /// Possibility of carrying two different weekly schedules (e.g. Summer/Winter) with 6 On/Off's per day
- /// New functions:
 - Display ambient temperature
 - Display energy consumption
 - Reading of the fault codes

* Standard
** Optional

DC Inverter Outdoor unit

- /// As the pioneer of DC Inverter driven room air conditioners our units boast the significant advantage of all DC Inverter driven compressors and fans allowing precise control of capacity and temperature.



RAK 18-25RPB



R32 PERFORMANCE

Wall Mounted

INDOOR UNITS

Indoor Unit Model		RAK-18RPD	RAK-25RPD	RAK-35RPD	RAK-42RPD	RAK-50RPD
Nominal Cooling Capacity (min - max)	kW	2.00 (0.90 - 2.50)	2.50 (0.90 - 3.10)	3.50 (0.90 - 4.00)	4.20 (1.70 - 5.00)	5.00 (1.90 - 5.20)
Sensible Cooling Capacity	kW	1.9	2.1	2.4	3.3	3.4
UK Cooling Capacity (sensible)	kW	1.9 (1.7)	2.4 (2.0)	3.3 (2.5)	4.0 (3.2)	4.6 (3.2)
Nominal Heating Capacity (min - max)	kW	2.50 (0.90 - 3.20)	3.40 (0.90 - 4.40)	4.20 (0.90 - 5.00)	5.40 (1.70 - 6.00)	6.00 (2.20 - 7.30)
Nominal cooling power input (min - max)	kW	0.42 (0.25 - 1.01)	0.55 (0.25 - 1.29)	0.94 (0.25 - 1.46)	1.12 (0.30 - 1.70)	1.56 (0.50 - 2.10)
Nominal heating power input (min - max)	kW	0.52 (0.25 - 0.97)	0.73 (0.25 - 1.50)	1.00 (0.25 - 1.70)	1.32 (0.50 - 2.10)	1.66 (0.50 - 2.75)
Seasonal Efficiency SEER ⁽⁴⁾		8.5	8.5	7.8	7.5	7.2
Energy Efficiency Class	kWh/yr	A+++	A+++	A++	A++	A++
	Annual Energy Consumption	82	103	157	196	238
Seasonal Efficiency SCOP ⁽⁴⁾ (Average Climate)		4.9	4.9	4.9	4.6	4.4
Energy Efficiency Class	kWh/yr	A++	A++	A++	A++	A+
	Annual Energy Consumption	287	305	311	522	549
Nominal Load Efficiency EER / COP ⁽⁵⁾		4.77 / 4.82	4.55 / 4.64	3.72 / 4.20	3.75 / 4.10	3.21 / 3.61
Energy Class (Cool/Heat)		A / A	A / A	A / A	A / A	A / A
Noise level cooling (sound pressure) (SL / L / M / H) ⁽²⁾	dB(A)	21 / 24 / 33 / 37	22 / 24 / 33 / 40	25 / 26 / 36 / 43	25 / 28 / 39 / 46	25 / 28 / 39 / 46
Noise level heating (sound pressure) (SL / L / M / H) ⁽²⁾	dB(A)	19 / 22 / 33 / 38	20 / 23 / 34 / 41	26 / 27 / 36 / 44	27 / 31 / 39 / 46	27 / 31 / 39 / 46
Noise level (sound power) ⁽¹⁾	dB(A)	51	54	57	60	60
Air flow cooling mode (SL / L / M / H)	m ³ /h	312 / 350 / 400 / 440	333 / 370 / 430 / 510	353 / 420 / 485 / 680	353 / 410 / 540 / 720	353 / 410 / 540 / 750
Air flow heating mode (SL / L / M / H)	m ³ /h	312 / 350 / 420 / 480	333 / 400 / 500 / 570	363 / 480 / 570 / 780	380 / 500 / 610 / 800	380 / 500 / 610 / 820
Dehumidification	l/h	1.2	1.4	1.6	1.8	2.0
Dimensions (H x W x D)	mm	280 x 780 x 230	280 x 780 x 230	280 x 780 x 230	280 x 780 x 230	280 x 780 x 230
Weight	kg	8.5	8.5	8.5	8.5	8.5
Power supply		230V / 1Ph / 50Hz				
Drain diameter (ext)		φ16mm	φ16mm	φ16mm	φ16mm	φ16mm
Remote Control	Std	Infra Red (RAR-6N1)	Infra Red (RAR-6N1)	Infra Red (RAR-6N1)	Infra Red (RAR-6N1)	Infra Red (RAR-6N1)
	Opt	SPX-WKT3 / SPX-RCDB	SPX-WKT3 / SPX-RCDB	SPX-WKT3 / SPX-RCDB	SPX-WKT3 / SPX-RCDB	SPX-WKT3 / SPX-RCDB

OUTDOOR UNITS

Outdoor Unit Model		RAC-18WPD	RAC-25WPD	RAC-35WPD	RAC-42WPD	RAC-50WPD
Noise level cooling (sound pressure) ⁽³⁾	dB(A)	44	46	48	49	49
Noise level heating (sound pressure) ⁽³⁾	dB(A)	45	47	49	50	50
Noise level (sound power) ⁽¹⁾	dB(A)	58	60	61	63	63
Air flow (Cooling / Heating)	m ³ /h	1860 / 1620	1860 / 1620	1920 / 1620	2160 / 2160	2160 / 2160
Dimensions (H x W x D)	mm	548x750 x288	548x750 x288	548x750x288	600x792x299	600x792x299
Weight	kg	32.5	32.5	32.5	39.0	39.0
Piping diameter (Liquid / Gas)	Inch	1/4 - 3/8	1/4 - 3/8	1/4 - 3/8	1/4" / 1/2"	1/4" / 1/2"
	mm	6.35 - 9.52	6.35 - 9.52	6.35 - 9.52	6.35 - 12.7	6.35 - 12.7
Minimum Piping Length	m	3.0	3.0	3.0	3.0	3.0
Maximum Piping Length / Height Difference	m	20 / 10	20 / 10	20 / 10	20 / 10	20 / 10
Current Quantity of Refrigerant	kg	0.87	0.87	0.87	1.05	1.05
Chargeless / Additional Refrigerant Charge	m / g/m	20 / -	20 / -	20 / -	20 / -	20 / -
Power supply		230V / 1Ph / 50Hz	230V / 1Ph / 50Hz	230V / 1Ph / 50Hz	230V / 1Ph / 50Hz	230V / 1Ph / 50Hz
Recommended fuse size	A	15	15	15	25	25
Starting current	A	2.9	3.9	5.1	6.0	7.1
Running current (cooling/heating)	A	1.09-4.39 / 1.09-4.22	1.09-5.61 / 1.09-6.52	1.09-6.35 / 1.09-7.39	1.30-7.39 / 2.17-8.70	1.30-8.70 / 2.17-11.96
Interconnecting Cables	No.	1.50x 3+EARTH	1.50x 3+EARTH	1.50x 3+EARTH	1.50x 3+EARTH	1.50x 3+EARTH
Working Range (cooling/heating)	°C	-10°C~+43°C / -15°C~+21°C				
Refrigerant / GWP		R32 / 675	R32 / 675	R32 / 675	R32 / 675	R32 / 675
Compressor type		Rotary	Rotary	Rotary	Rotary	Twin Rotary
System Price	(£)	616	653	767	1,022	1,445

(1) Sound power level is the A-weighted sound power level [dB(A)] measured at standard rated conditions for the "cooling" mode operation in accordance to EN12102
 (2) Sound pressure level is measured at 0.8 meter beneath indoor unit 1m from discharge grille in anechoic chamber
 (3) Sound pressure level is measured at 1.0m from front face of unit, 1.5m above the ground in anechoic chamber
 (4) Data calculated in accordance to prEN14825 and the Commission Communication 2012/C 172/01
 (5) Nominal load efficiency (Cooling 35°C/27°C, Heating 7°C/20°C)

! The indoor units are now to be supplied with 220-230 V from the outside unit.

