

370x238mm



## XWEB5000: MONITORING, CONTROLLING and SUPERVISING

It is provided with a powerful supervision engine suited for larger installations (with up to 247 devices) in the refrigeration, conditioning and building automation field, where it is necessary to program several different interactive actions that the controller has to perform. It is extremely well suited to hypermarkets, large storage and distribution centres, as well as production and storage goods processing and is ideal for the large service center (modem, ethernet and internet connection). The system manages the alarm transmission to the "in charge" service (via FAX, e-mail, SMS and also through relay outputs) and it can also work without a PC using direct connection of a monitor, keyboard and mouse. Local or remote connection PC is made using Microsoft Internet Explorer® and Firefox® browser.

- Monitoring, controlling and supervising web server connection to Dixell's controllers with serial output and to other ModBUS-RTU compatible devices
- 19" RACK or desk mounting
- Built-in editor with local and field simulator
- Quick and easy connection to Web pages with dedicated interface for PDA/Smartphone
- All controller values can be displayed using a special "Single View" window or a "Run Time" window with many controllers viewed at the same time. The ability to use a "Layout" view of the plant with pictures and schematic drawings is also an option
- Complete and simplified analysis of the unit functioning thanks to a powerful tool that allows to view data in graphical format (Excel®)
- One year of stored data inside the XWEB memory (one year of stored data with 15min sampling time)
- Easy plant management by means of the "Scheduler" to send commands according to a custom calendar
- Calendar function and internal RTC both for alarm transmission to the "in charge" service and command sending to the controllers
- Possibility to divide the controllers set in different categories of products with their own sampling time
- Ability to select particular data on which to perform the monitoring with reduced sampling time
- Alarm sending via FAX, SMS or e-mail
- Commands sending activation through digital input
- Standard communication protocol ModBUS-RTU
- 50VA max power absorption
- DPC (Dew Point Control) for anti-sweat heater management

### HOW to ORDER

XWEB5000 

X	W	E	B	5	0	0	0	-	6	0	0	0	E
---	---	---	---	---	---	---	---	---	---	---	---	---	---

E
---

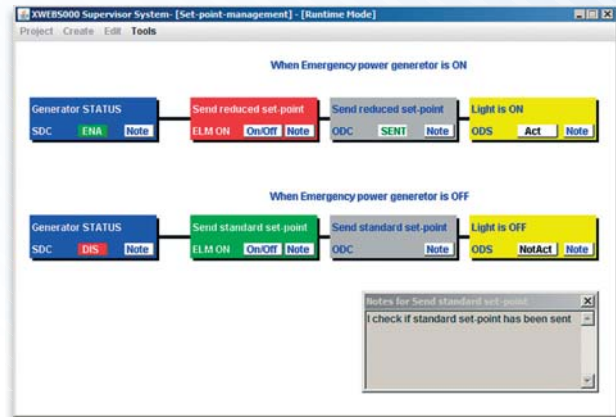
**Internal modem**

0 = No

1 = Yes

## SUPERVISING

With XWEB5000 it is possible to intercept sending commands to monitored devices. The installer can create a supervision "Project" (or several "Projects") by programming links between the input variables (inputs, status and outputs of a controller) and defining what actions the system must take when these conditions are met. Unlike a standard PLC, where the user is required to know a specific programming language, with the XWEB5000 the "project" can be easily created using a simple graphic user interface, but more importantly, without the need to learn a complex programming language. Specific software is not necessary: the supervising software has been written in JAVA and it runs on the client PC. The project is saved to the XWEB5000; several projects can be run simultaneously.



## AUTOMATION

The high versatility and programmability allow the XWEB5000 to perform automation programs. In fact it's possible, for example, to manage the use of plant lights, internal or external signs, the battery charge/discharge as fork lifts, increasing the energy saving process. In case of compressor fault or when the absorption threshold exceeds the set, etc., the monitoring unit can automatically interact with the rest of system.

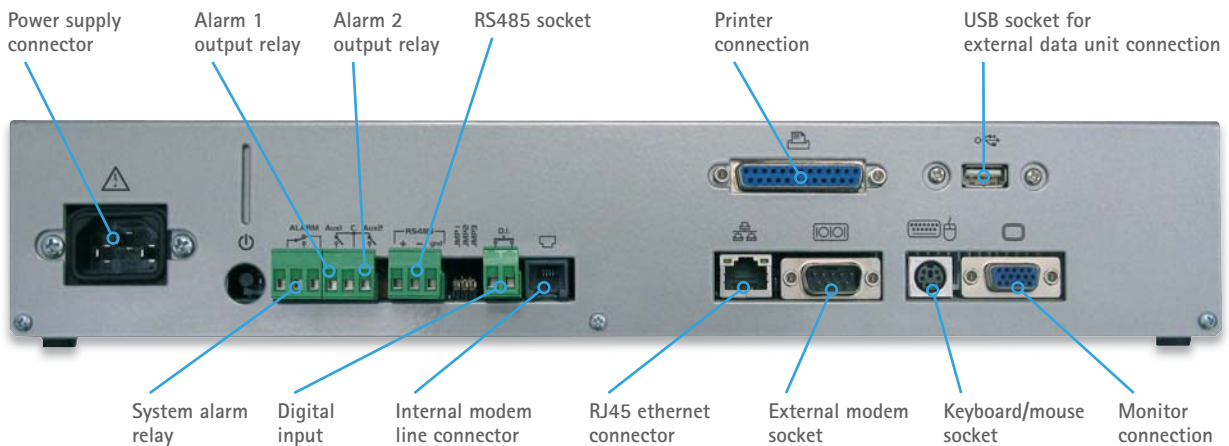
### FEATURES

Power supply  
LAN output  
USB output  
RS485 output  
Relay output  
Digital input  
Print output  
Keyboard/mouse output  
Video output  
Sampling time  
External modem  
Internal modem

### XWEB5000

110÷230Vac  
pres  
2  
pres  
3  
pres  
25 pin  
pres  
pres  
pres  
from 1 to 255 minutes  
analogue  
analogue opt

## HARDWARE



More information about functions and connections at pages 132÷136